
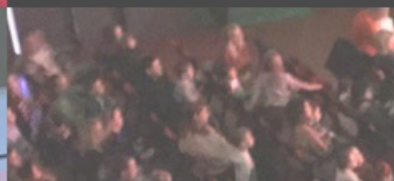
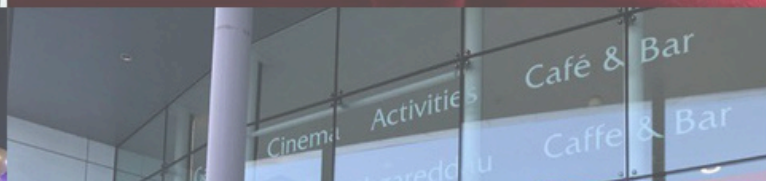


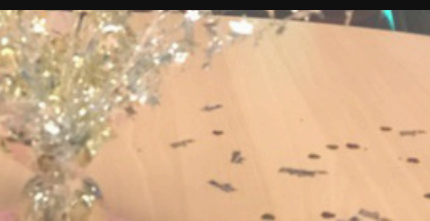


Creu 
Cymru

MEMBERSHIP INFORMATION



**Strengthening the
performing arts in Wales**



WHO ARE WE?

Creu Cymru champions Wales' vibrant sector of performing arts; connecting people, audiences and communities.

Our membership forms a collaborative network; with a strengthened and unified voice that we project and advocate on behalf of to public governing bodies, ensuring vital industry representation and influencing positive change.

Creu Cymru supports venues, companies and individuals in progressive growth strategies. Our curated visits and bursary opportunities, specialist training and resources develop the collective skills and experience of our creative workforces. This ensures that programming across the sector continues to evolve with a focus on equality, relevance and inclusion for new and diverse audiences.

WHO CAN JOIN?

Creu Cymru membership helps us to create a vibrant and resilient performing arts sector in Wales.

Membership is open to any Wales based professional organisation or individual whose principal purpose is producing, presenting or curating performing arts. In addition, we have an Associate level of membership which is open to Wales based professional organisations working within the theatre or dance sector in a supporting or strategic capacity that can also support the mission of Creu Cymru but whose principal purpose is not producing, presenting or curating performing arts work.

Member Benefits

In addition to helping transform the Welsh performing arts sector, Creu Cymru provides the following services and benefits to its membership:

Subsidised Training & Professional Development

- **High-quality training at a fraction of the cost** – Creu Cymru offers heavily **subsidised training** in areas like Equality, Diversity & Inclusion (EDI), PR for Creatives, and sustainability.
- **The Swits (Switch) Programme** provides **staff development opportunities**, allowing team members to gain new skills without expensive external training.
- **Expanding Stages** bursaries helps members attend festivals, conferences, and performances.
- Free **wellbeing sessions** covering resilience, self-care, and confidence.

Networking & Collaboration

- Be part of a **national network of over 65 performing arts organisations and professionals**.
- Regular **membership meetings and networking events** to share best practices and explore collaborations.
- Access to the **Annual Conference** featuring industry leaders, learning sessions, and opportunities to showcase work.

Organisation-Wide Benefits – Extending Value to All Staff

- Unlike many memberships that are limited to one person, **Creu Cymru's organisational membership extends benefits to all staff**, maximising return on investment.

Advocacy & Representation

- **Representation to the Welsh Government, Arts Council of Wales, and policymakers**, saving time and effort on advocacy work.
- Creu Cymru's **involvement in consultation responses** helps ensure policy changes benefit members, potentially protecting funding and income streams.
- We support lobbying efforts, especially leading up to the **2026 Senedd Elections**.

Financial Support & Subsidies

- Subsidised accommodation for the **Edinburgh Fringe Festival**, making participation more affordable.
- Bursaries for professional development, travel, and event attendance.

Sector Development & Innovation

- Creu Cymru leads **sustainability projects**, such as expanding the **Theatre Green Book** in Wales, which helps members develop sustainable practices, which can reduce long-term operational costs.
- Collaboration on the development of **CIISA** (Creative Industries Independent Standards Authority) to improve industry safeguarding.
- Support for **widening engagement standards** to improve accessibility in arts and cultural venues.
- Hynt - Hynt is the national access scheme and is an ACW initiative that Creu Cymru manages on their behalf. This includes training, advice and an annual Symposium*.

Exclusive Member Benefits

- Promotion of your **work, events, and job vacancies** through Creu Cymru's platforms.
- Advice and support from a **respected industry authority**.
- Regular updates via **bi-monthly newsletters** with industry news and programming opportunities.

Membership Costs

- **Full Membership** is based on 0.1% of 2019/20 turnover, with fees ranging from **£472.50 to £2,625 per year**. If an organisation sends multiple staff members to **subsidised training, Edinburgh Fringe, and networking events**, they can easily save financially.
- **Associate Membership** for supporting organisations is **£315 per year**.
- **Individual Membership** is only **£60 per year**.

With a mix of financial support, training, advocacy, and networking opportunities, Creu Cymru membership provides significant value for money by enhancing professional development, expanding opportunities, and strengthening the performing arts sector in Wales.

**Hynt is the national access scheme and is an ACW initiative that Creu Cymru manages on their behalf. This includes training, advice and an annual Symposium. Membership to Hynt is not included as part of your membership but you will have access to resources and the Hynt Symposium.*

2025/26 Projects and Activity

Expanding Stages

Supporting the growth of Welsh theatres, producers, and performing arts professionals, Expanding Stages strengthens industry resilience and innovation. Through Curated Visits, members explore diverse programming, engage wider audiences, and collaborate across the sector.

2025/26 opportunities so far include Imagine Festival (Edinburgh), Brighton Festival and UK Theatre Conference.

Theatr Cymraeg

A symposium event aimed at bringing creatives, companies and those who present Welsh language theatre together to discuss current issues facing the sector and how we might overcome them.

Access Forum

A biannual meeting with partners sharing best practice, projects, and a space for Deaf and disabled people to shape sector developments.

Training

We will continue to provide subsidised training for members including EDI training in Welsh and English, PR for Creatives and Sustainability / Theatre Green Book.

Sustainability Forum

Open to the membership and further afield, sharing best practice and initiatives in the sector. This work will be integrated into our project to enhance and support use of the Theatre Green Book in Wales.

Theatre Green Book Project

We aim to expand the use of the Theatre Green Book in Wales and encourage sustainable practices across the cultural sector, particularly in theatres and producing companies.

2025 Annual Conference

2nd and 3rd April, Wales Millennium Centre Cardiff

The Creu Cymru Conference, sponsored by Ticketsolve, aims to bring together professionals working across the performing arts in Wales. The Conference will provide opportunities to hear about incredible initiatives, best practice and fantastic cultural events that have been happening in the sector. It also is an opportunity to share your worries, frustrations and work on positive ways to drive change at this difficult time for the sector.

The event is open to Creu Cymru members and anyone else working in the performing arts in Wales.

The Swits (Switch) Programme - Staff Exchange Programme

The Swits (Switch) Programme offers all technical, administrative and artistic personnel from Member organisations the opportunity to exchange know-how and techniques at a Creu Cymru Member organisation from another part of Wales.

The programme encourages the sharing of best practices and knowledge, peer learning, on-the-job training, and the development of personal, professional and skills and competence.

Grants will include travel costs and subsistence costs.

Wellbeing Sessions

We will be offered three wellbeing 'boost' sessions, free for members to attend. Topics include Resilience, Self-care and Confidence.

Edinburgh Fringe Festival Flat

We know it can be expensive to attend, so Creu Cymru has arranged 7 nights of subsidised accommodation in an 8-bedroom apartment. This year we're arriving on Wednesday 13th August and departing on Wednesday 20th August.

CIISA

We will continue to support the creation of CIISA (Creative Industries Independent Standards Authority) and we will work with the Unions and other industry partners, as well as members to develop safeguarding principles and methods of reporting inappropriate behaviour throughout the sector.

PiPA

We will continue to work with PiPA (Parents and Carers in Performing Arts) and increase their presence in Wales. We will work with them on Wales specific programmes and activities such as the PiPA Wales Initiative.

2026 Senedd Elections

We will work with members to develop a campaign aimed at supporting members with their lobbying efforts, a public campaign and working with political parties to advise on culture pledges as part of their manifestos as part of the 2026 Senedd Elections.

Hynt / All In

We will continue working with UK Partners on the development, pilot and roll out of the UK National Access Scheme, supporting venues and cardholders through transition.

And more! As always, keep an eye on newsletters and our social media channels for the latest updates.



Other Updates

CRM

We will shortly be moving to a CRM system to manage the membership. This will include updating contact information and also a member forum where you will be able to share information, ask questions etc.

Membership Fees

We are spending time this year to review our membership fees, making sure we are being as competitive as possible whilst offering the best value for money we can.

We understand that you are counting every penny and want to ensure that you are all making the most of your membership. A good time to remind you - if you an organisational member our activity and services are available to all your members of staff.

We will update members in the Autumn to give you a chance to feed into any changes.



Full and Associate Membership runs April–March.
Automatic renew invoices are sent to existing
members in March each year.

Membership is held in the organisation's name and
all employees can benefit from membership.

Individual members can join at any point
throughout the year.

For new members give us a call to talk about
joining 01970 822222 or complete your
membership application online
www.creucymru.com

CONTACT

yvonne@creucymru.com

louise@creucymru.com

megan@creucymru.com



Creu Cymru



@creucymruarts